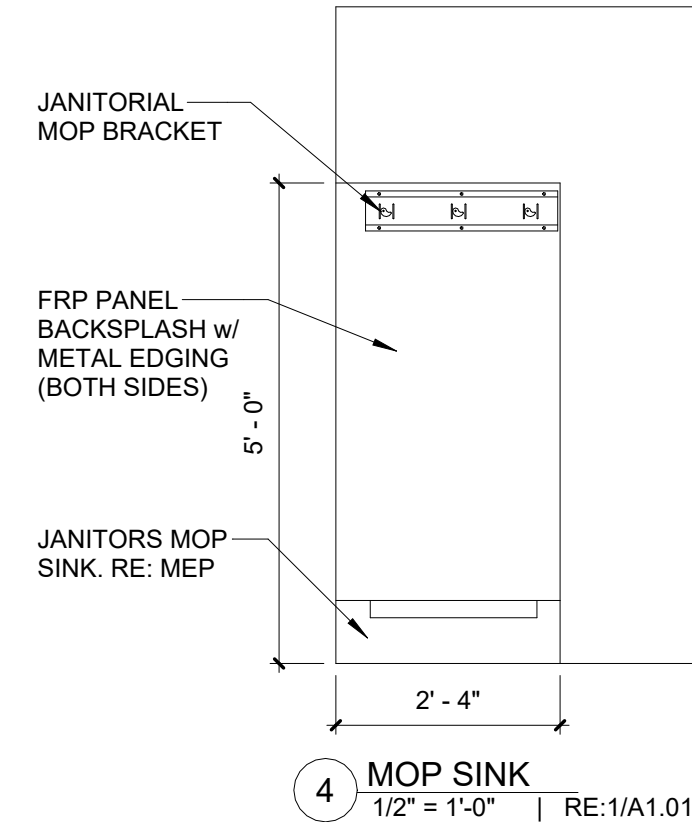
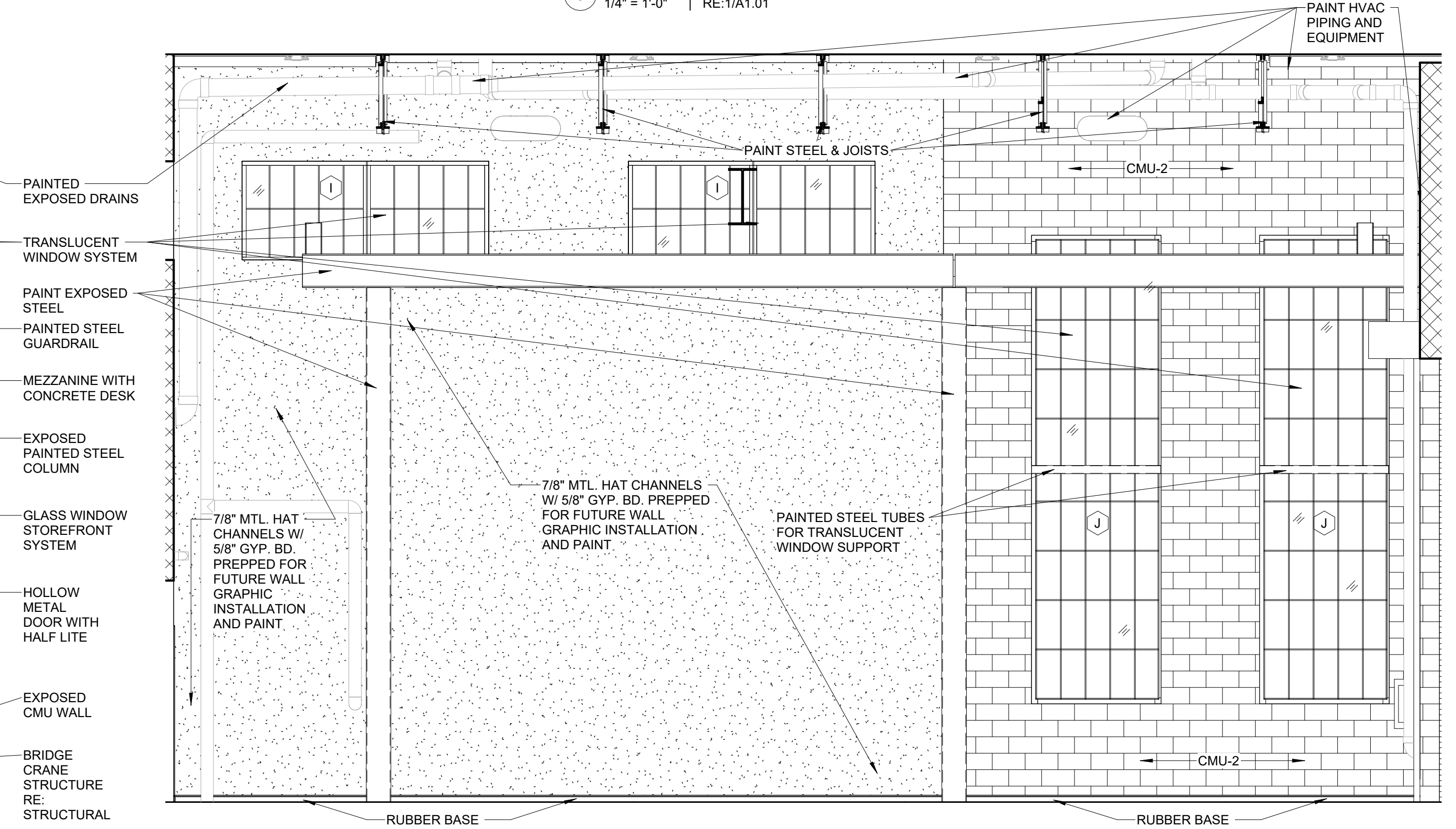
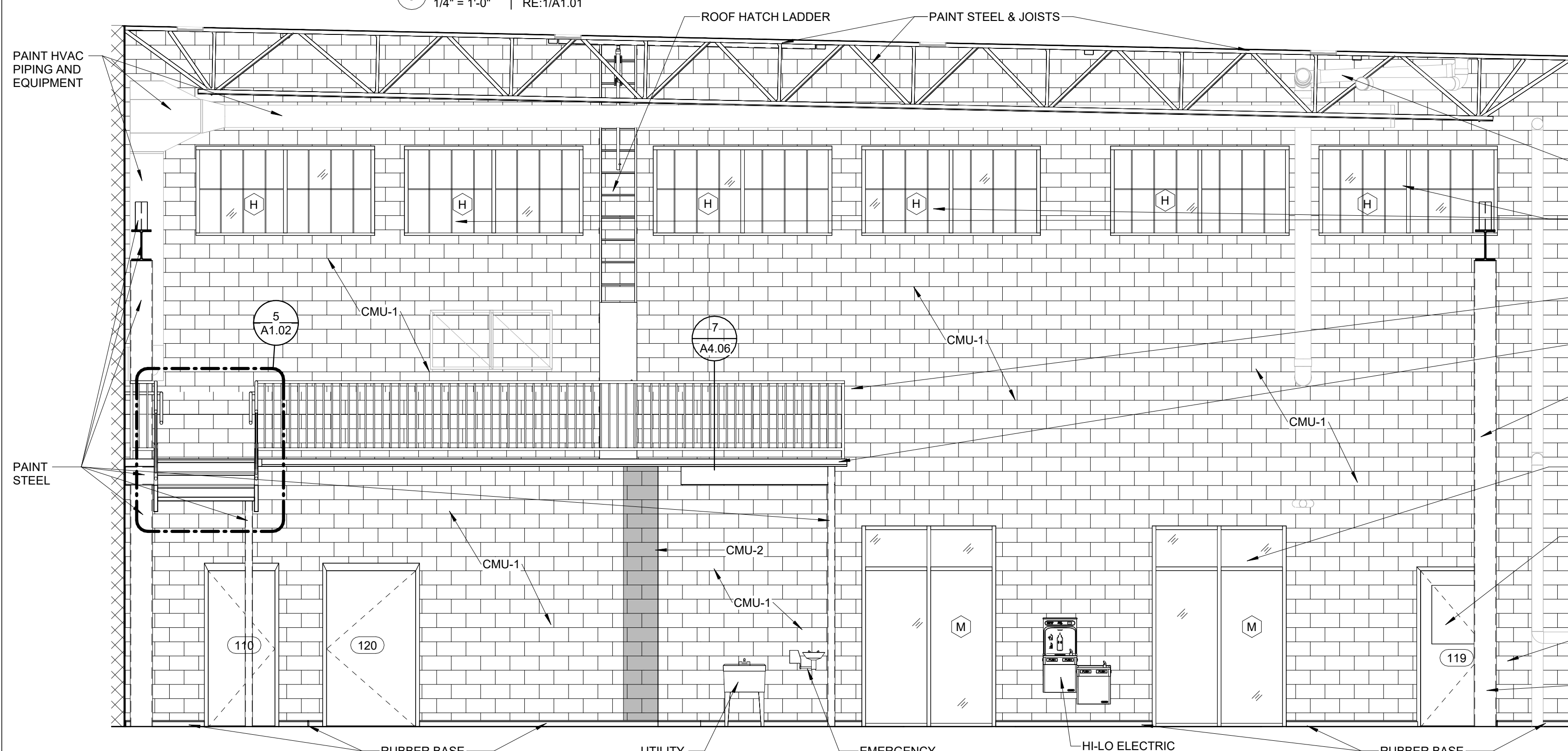
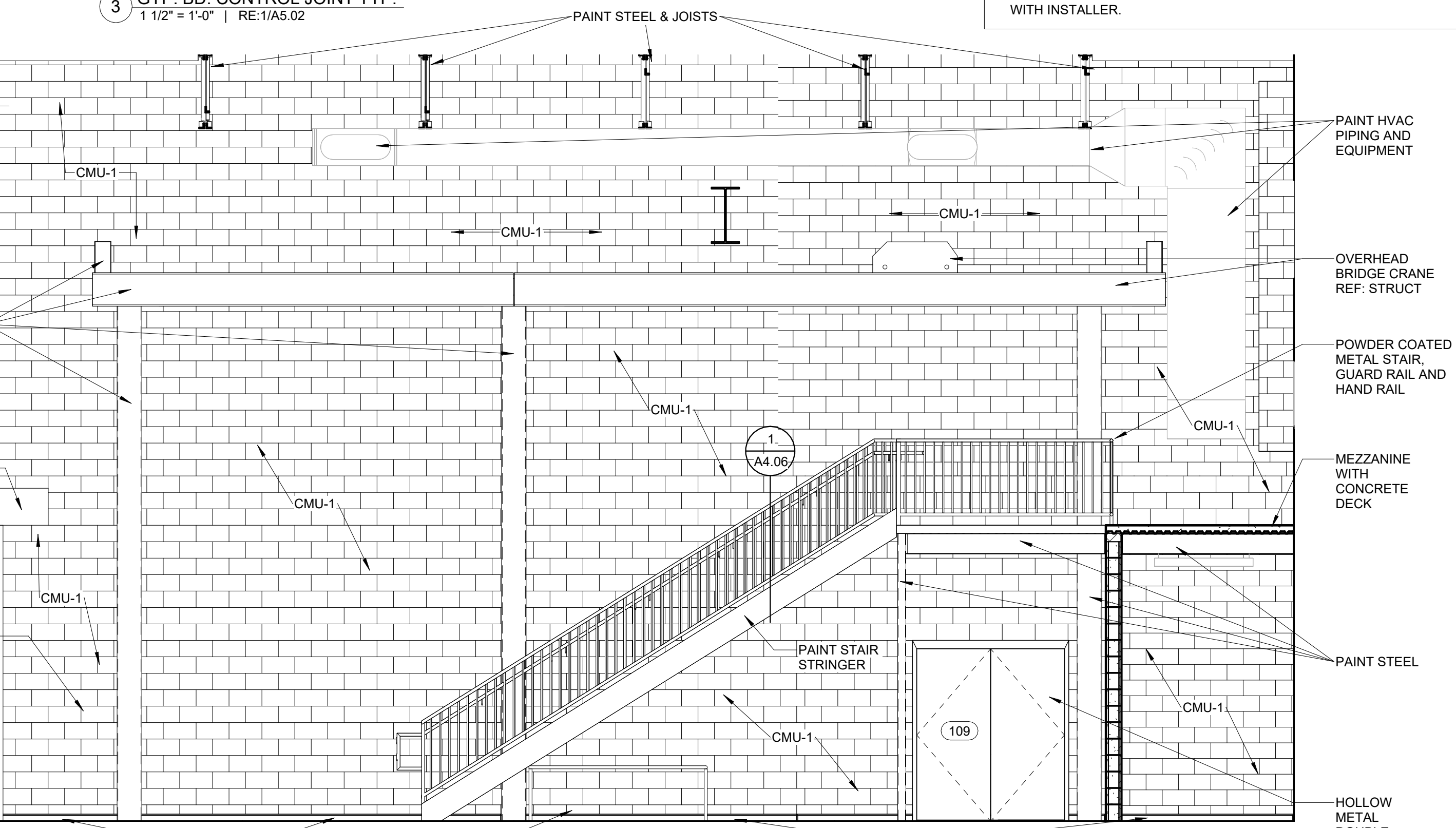
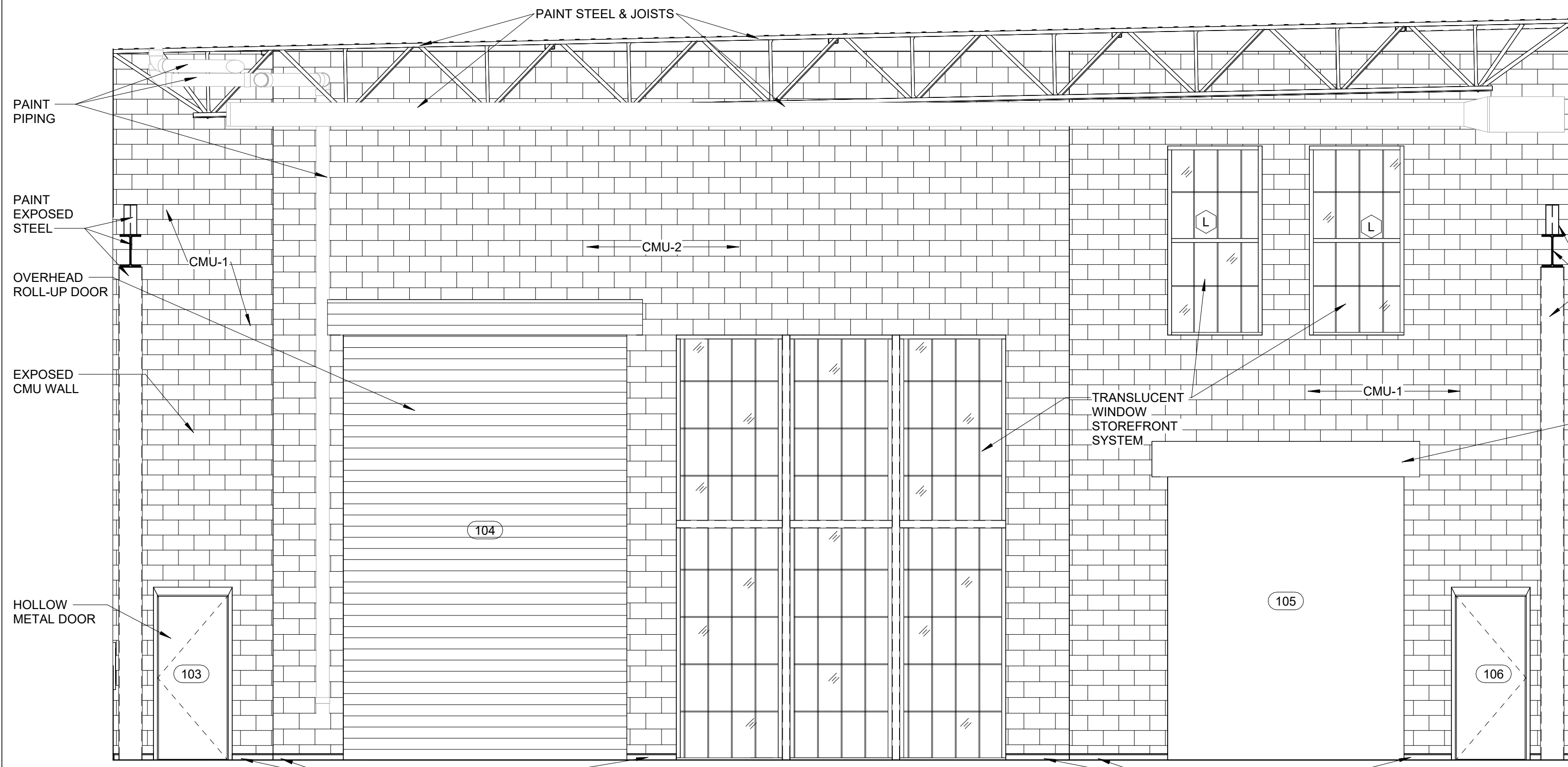


ALL PARTIES SHOULD BE AWARE THAT COMPLETING THESE PENETRATIONS WILL REQUIRE CAREFUL COORDINATION OF MEANS AND METHODS. SPECIFICALLY, WOOD TEMPLATES MUST FIRST BE FABRICATED AND SET IN PLACE AT EACH PENETRATION LOCATION PRIOR TO GLASS INSTALLATION. ONCE PROPERLY INSTALLED, THESE TEMPLATES WILL NEED TO BE REMOVED, THE GLASS CUT PRECISELY TO MATCH THE PENETRATIONS, AND THEN THE GLASS REINSTALLED TO ACHIEVE THE REQUIRED FIT AND FINISH. THIS PROCESS SHOULD BE ANTICIPATED AND ACCOUNTED FOR IN BOTH SCHEDULE AND MANPOWER PLANNING SO THERE ARE NO MISUNDERSTANDINGS AS WORK PROGRESSES.



- GENERAL NOTE**
1. CONTRACTOR SHALL PROVIDE BLOCKING IN ALL WALLS FOR ALL TOILET ACCESSORIES.
 2. VERIFY ALL DIMENSIONS FOR EQUIPMENT.
 3. ALL INTERIOR ELEVATIONS ARE LABELED BY THE ROOM NAME, NUMBER AND PLAN N, S, E & W. THIS IS NOT TRUE N, S, E & W.
 4. THE CONTRACTOR SHALL VERIFY ALL INTERIOR ELEVATION DIMENSIONS, MATERIAL TRANSITIONS, AND ALIGNMENT PRIOR TO INSTALLATION.
 5. ALL WALL FINISHES, INCLUDING PAINT, TILE, WOOD PANELING, AND SPECIALTY MATERIALS, SHALL BE INSTALLED PER APPROVED DETAILS, SHOP DRAWINGS, AND MANUFACTURER SPECIFICATIONS.
 6. WALL-MOUNTED ACCESSORIES, FIXTURES, AND EQUIPMENT MUST BE PROPERLY COORDINATED WITH WALL FINISHES TO PREVENT CONFLICTS AND MISALIGNMENT.
 7. ALL MATERIAL TRANSITIONS MUST BE COORDINATED AND PROPERLY FINISHED PER THE DRAWINGS AND SPECIFICATIONS.
 8. OMISSION OF ANY WALL-MOUNTED ITEMS IN THE INTERIOR ELEVATIONS DOES NOT WARRANT OMISSION FROM THE PROJECT. SOME ITEMS MAY NOT BE SHOWN FOR CLARITY BUT ARE STILL REQUIRED PER CONTRACT DOCUMENTS.
 9. FINAL WALL FINISH INSTALLATION SHALL BE REVIEWED WITH THE DESIGN TEAM PRIOR TO PROJECT COMPLETION TO ENSURE COMPLIANCE WITH DESIGN INTENT.
 10. ALL WALL COVERINGS NOTED IN THE DOCUMENTS ARE NOT INCLUDED IN THE CONSTRUCTION SCOPE. THESE ARE SHOWN FOR REFERENCE AND SHALL BE PROVIDED BY THE OWNER. GC SHALL PREP WALL TO RECEIVE COVERINGS AND SHALL COORDINATE WITH INSTALLER.



No.	Description	Date